


FEEDING & MANAGEMENT TIPS:

- 1 Always provide plenty of clean fresh water.
 - 2 Do not allow feed to accumulate in feeders.
- 
- 3 Always provide fresh feed and hay, free of mold.
 - 4 When changing rations, allow 7-10 days for the animal to adjust.
 - 5 Periodically weigh feed to ensure consistent quantities.
 - 6 Keep high quality minerals available.



THREE CONVENIENT LOCATIONS TO SERVE YOU!

BRYAN LOCATION

979-778-6000

1800 N. Texas Ave. Bryan, TX 77803
feedsales@producerscooperative.com

HILLSBORO LOCATION

254-266-7501

5748 TX-22 Hillsboro, TX 76645
hillsboro@producerscooperative.com

HEIDENHEIMER LOCATION

254-983-1070

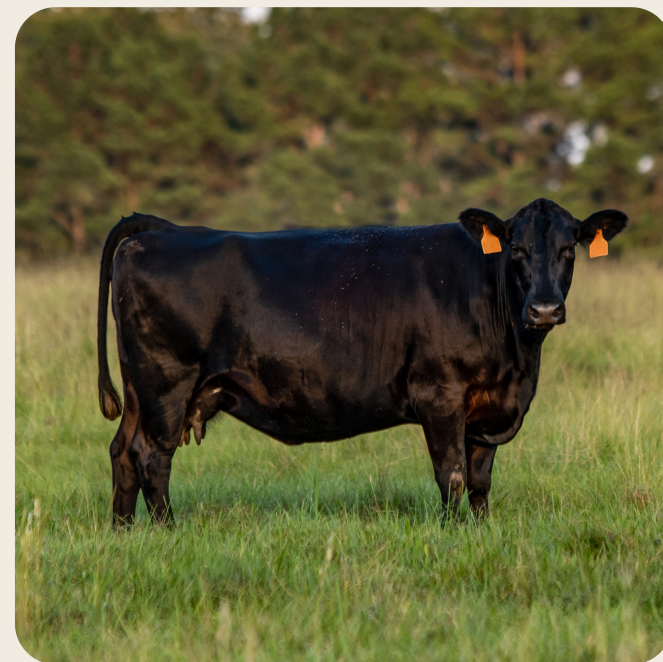
5580 Avenue F Heidenheimer, TX 76533
producers@producerscooperative.com



WWW.PRODUCERSCOOPERATIVE.COM

PRODUCERS
COOPERATIVE ASSOCIATION

PELLETED & CUBED BEEF FEEDS



Everything Ag
Since 1943

OUR PELLETED & CUBED FEEDS

14% HIGH ENERGY CUBE

Protein- 14% Fat-2.6% Fiber-10.5%

This high grain, **high energy cube** is recommended for all types of cattle grazing good quality pasture or during a drought to stretch forage.



20% PASTURE CUBE

Protein- 20% Fat-2.6% Fiber-11%

This is a **cubed feed** recommended for supplementing cattle on pasture and is an economical choice with vegetable based protein.



20% BREEDER CUBE

Protein- 20% Fat-3.10% Fiber- 10%

This **cubed feed** is high in energy with added grain, additional trace minerals, and vitamin fortification. Recommended for supplementing cattle that need to add condition or developing heifers.

CATTLE PELLET 1.5

Protein- 14% Fat-5% Fiber-10.5%

Formulated with intake modifying technology, it is recommended for grazing cattle. Intake should be about 1.5% of bodyweight with adequate forage. Medicated with Rumensin®.

BEEF DEVELOPER PELLET

Protein- 12% Fat-3% Fiber-15%

This economical, high energy feed is recommended for supplementing all beef cattle and developing calves.



38% HIGH PROTEIN CUBE

Protein- 38% Fat-1.35% Fiber-13%

This **cubed feed** is cottonseed meal based and contains all vegetable protein. The high protein amounts improve intake & digestibility of medium to low quality forage. Recommended for all classes of cattle with abundant, low quality forage.

STOCKER STARTER DX

Protein- 12% Fat-3.30% Fiber-18.20%

High roughage feed that is medicated with Deccox to prevent Coccidia. Contains organic trace minerals and yeast to ensure a good start. Recommended for calves starting on feed.

CREEP PELLET

Protein- 14% Fat-3.50% Fiber-10.00%

High energy feed that comes in an 11/64" & 3/8" pellet that is recommended as a free choice supplement for nursing calves from 150-300 lbs. Works great as a weaning feed when fed at 1% of bodyweight.



18% LACTATION PELLET

Protein- 18% Fat-4.10% Fiber-9.70%

High in calcium & designed specifically for milk production. Recommended for cows with high lactation potential. Feed along with a high quality forage & free choice mineral.

Available in 50lb. bags, totes, & bulk. Call Inside Sales for more information (979)-778-6000

