

# PRODUCERS

## COOPERATIVE ASSOCIATION

Proudly owned by the farmers and ranchers of the  
Brazos Valley since 1943.

See you this Saturday!



### In-Person Class Information:

## IDENTIFYING & CONTROLLING COMMON AQUATIC PLANTS

1-CEU  
General

Saturday, June 12th @ 9am-10am

Brittany Chesser, Aquatic Vegetation Management Program Specialist,  
Texas A&M AgriLife Extension

Bring your aquatic plants for identification! But keep them hydrated in a pond water filled container with a lid!

- Location: Producers Cooperative Association, Bryan TX. In the conference room, next to the feed dock.
- CEU credit offered for in-person attendees ONLY.
- Full occupancy is welcomed.



1800 N Texas Avenue, Bryan TX 77803

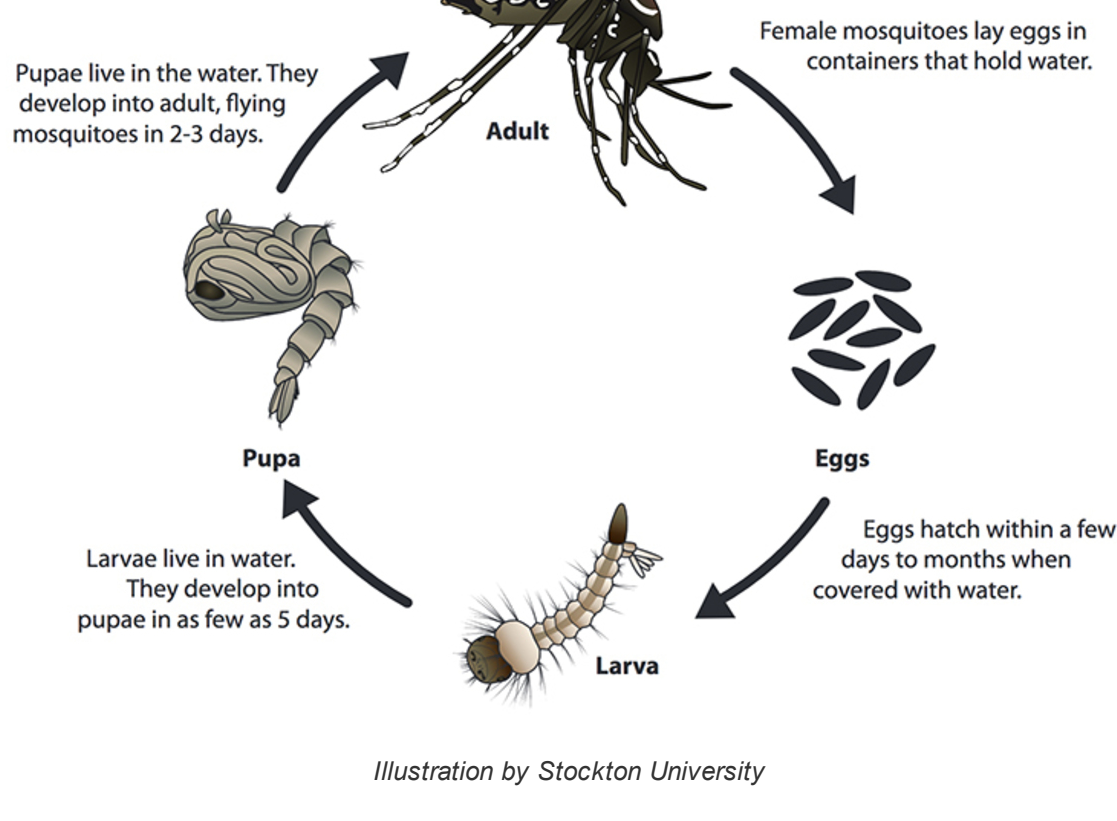
(979) 778-6000



### Double Down Deer Mineral

Producers is now selling Double Down Deer Mineral! Years in development, this mineral is built for absorbable nutrition and is a full mineral package for whitetail deer, as well as other game and exotics. A healthy deer population can lead to higher recruitment rates, healthier fawn crops, greater body mass, larger antler growth potential and reduced overall stress of the animal when sufficient nutrients are supplied and consumed. It is now available in eight and fifty-pound bags!

For more information about Double Down Deer Mineral, call Producers Feed Sales  
979-778-2864



### Breaking the Mosquito Life Cycle

With the frequent rain showers that the Brazos Valley received, mosquitos are thriving with endless opportunities of breeding sites. As shown in the illustration above, the entire life cycle of the mosquito revolves around standing water. The eggs hatch, develop into larvae, pupae, and then adults emerge to mate, feed, and then repeat the cycle by laying eggs again in the water. To reduce the population, **eliminate as much standing water as possible!** Potential breeding sites may include a pool of water in a bucket, standing puddles of water in the yard, old tires, your child's outdoor toys that could hold water, etc.....

If you cannot remove the standing water mosquitos use to breed and hatch, Producers Cooperative can help you find a treatment option to fit your needs.

#### Treatment Options:

**Breeding Areas-**When water cannot be be dumper or drained, use a larvicide directly in the water such as a Mosquito Dunk or Mosquito Bits. These products contain a biological control called *bacillus thuringiensis* (BT). Apply one teaspoon per 25 square feet of standing water every 7 days. These products are safe for animals to consume.

**Bedding Areas-** Adult mosquitos rest on foliage during the day, coming out in the evening to feed. Shrubs and tall grasses are their favorite bedding sites. The foliage around your home can be treated with an insecticide to kill them where they lay. Spray your lawn and shrubs around the house to the point of runoff. There will be a bit of residual activity with the insecticides that will continue to work over time. For best results, spray while the sun is shining.

**Area Control-** Area control products can provide temporary relief for outdoor activities. Using these products can make your backyard bearable for an evening BBQ. Insecticidal foggers, although short-lived, work well. Immediately before an event, your outdoor area can be treated quickly. These are propane powered, so use caution. The fogger and the fogging agent are sold separately.

For recommended mosquito treatment and/or prevention methods

call Producers Garden Center at 979-778-6000

### Producers 4-H Scholarship Program

During the past 78 years, our cooperative has proudly demonstrated its commitment to youth involved in agriculture by contributing to scholarships, educational programs, and youth livestock shows.

This year, Producers Cooperative awarded scholarships in excess of \$16,000!

### 2021 Recipients



Katelyn Klawinsky  
Walker County



Cole Rappolee  
Leon County



Hailey Moncreiff  
Bell County



Colby Barton  
Milam County



### From The Ground Up

From The Ground Up educates our friends and neighbors in the Brazos Valley about agriculture and its impact on their everyday lives. Be sure to watch our weekly televised segment at approximately 6:15 am on Thursdays or during the Saturday 6 o'clock evening news on KBTX-TV 3, Bryan-College Station's CBS affiliate.

This weeks From The Ground Up segment covers the climate and the opportunity of improvement with Dr. Ron Gill.

Bryan-Heidenheimer-Hillsboro



Share this email:



Manage your preferences | Opt out using TrueRemove™  
Got this as a forward? Sign up to receive our future emails.  
View this email online.

1800 N. Texas Ave.  
Bryan, TX | 77803 US

This email was sent to .  
To continue receiving our emails, add us to your address book.

emma

Subscribe to our email list.