

PRODUCERS

COOPERATIVE ASSOCIATION

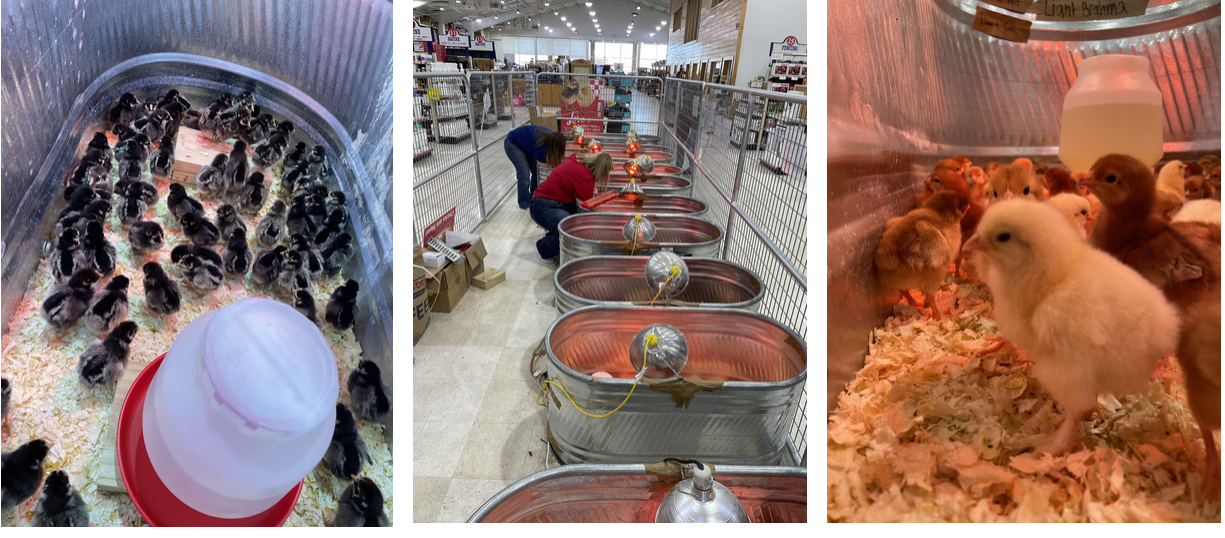
Proudly owned by the farmers and ranchers of the Brazos Valley since 1943.



Using Expanded Shale When Planting Trees & Shrubs

One of the biggest challenges in growing trees and shrubs in this area is poor drainage. Soil that drains poorly, especially in clay-type soils, can leave your root zone saturated in water, which then causes the roots to suffocate and rot. Roots need air to breathe! The best way to amend your soil when planting a new tree or shrub is to add expanded shale to the root zone. Expanded shale is a light, porous aggregate that improves drainage and increases soil aeration. Quickly amending the soil will greatly increase the chances of your tree or shrub growing and maturing into its full potential.

To learn more about proper planting techniques, call the Producers Garden Center at 979-778-6000



Chicks

Another delivery of chicks has arrived and the chicks are ready for their forever homes. Chick deliveries will end the week of March 31st, so hurry in and get your backyard flock started. Producers offers everything from waterers, shavings and electrolytes to the perfect feed to get your flock off to a great start. Stop by Producers today and pick out your new addition to your home flock.



Spring Growing Season

The 2021 spring growing season is underway and the Producers Agronomy Team is geared up and ready to serve the Brazos Valley! From weed identification to soil sampling, our team can help. Custom application services including dry fertilizer, impregnated fertilizer, spray treatments and pelletized lime for in season pH adjustments are available. In addition to custom application services, killebrews for bulk fertilizer and drag spreader rentals are also available for your convenience.

Call the Producers Agronomy Team today for expert recommendations and schedule your next application service. (979) 778-6000



From The Ground Up

From The Ground Up educates our friends and neighbors in the Brazos Valley about agriculture and its impact on their everyday lives. Be sure to watch our weekly televised segment at approximately 6:15 am on Thursdays or during the Saturday 6 o'clock evening news on KBTX-TV 3, Bryan-College Station's CBS affiliate.

This weeks segment covers ranching and future marketing in the beef industry with Mr. Greg Goudeau.

Bryan-Heidenheimer-Hillsboro



Share this email:



[Manage](#) your preferences | [Opt out](#) using TrueRemove™

Got this as a forward? [Sign up](#) to receive our future emails.

View this email [online](#).

1800 N. Texas Ave.
Bryan, TX | 77803 US

This email was sent to .

To continue receiving our emails, add us to your address book.

emma

[Subscribe](#) to our email list.